

# Foundation Formwork analyze

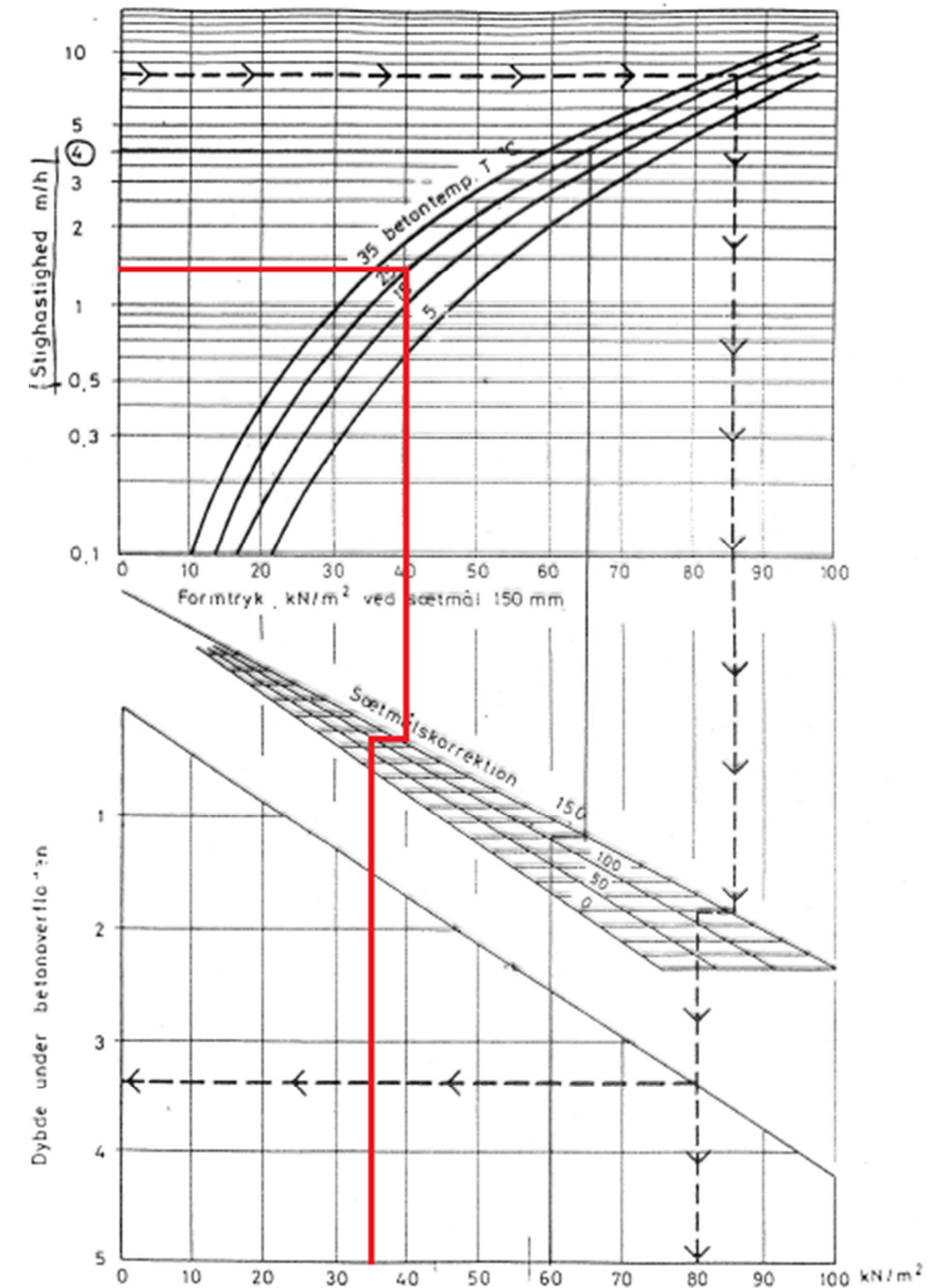
I'm using Paschal Raster system that can take a pressure up to 35kN/m<sup>2</sup>

From the table it allowed to cast up to 1,4 meters pr. Hour without arising any problematic trouble.

If other materials are used for formwork, they must be checked first as they might not take the required pressure.

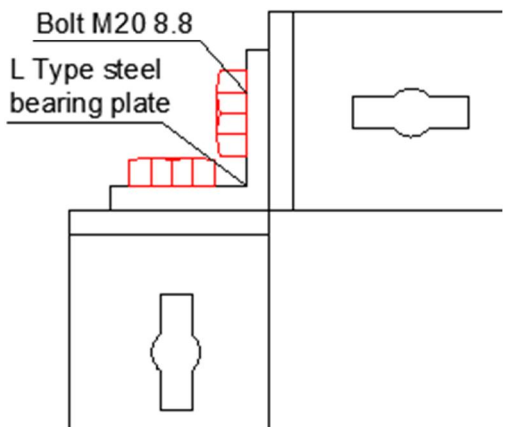
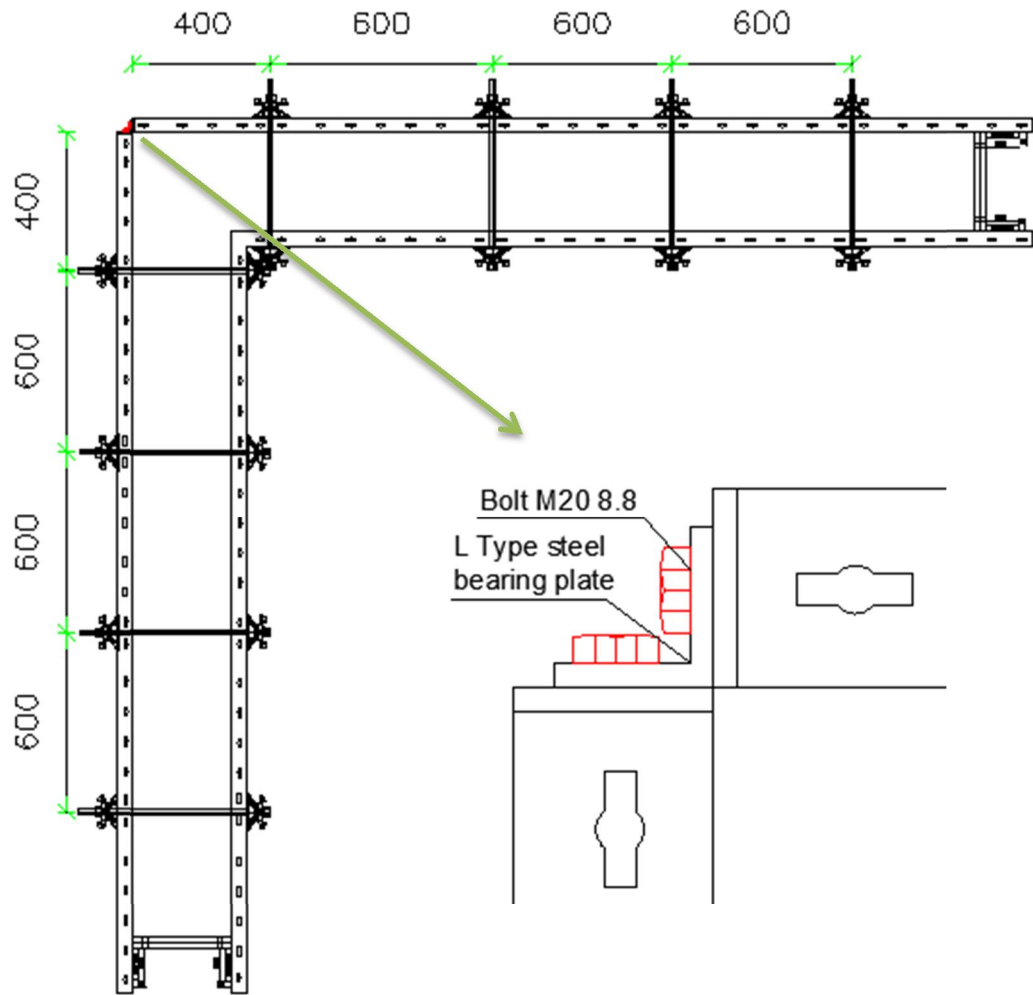
The weight of the form is 19,10 kg per pcs therefore telescope loader will be used to handle the formwork and reinforcement as they are quite heavier to lift by the person.

Produkt	Varenr.	Betegnelse	Vægt kg
<b>RASTER, h = 750 mm</b>			
		RASTER-kassette	
	104-1001	1.000 x 750	30,00
	104-1751	750 x 750	24,10
	104-1601	600 x 750	19,10
	104-1501	500 x 750	16,80
	104-1451	450 x 750	14,10
	104-1401	400 x 750	13,10
	104-1351	350 x 750	12,10
	104-1301	300 x 750	11,10
	104-1251	250 x 750	10,10
	104-1201	200 x 750	9,10
	104-1151	150 x 750	8,10
104-1101	100 x 750	7,10	
	104-1051	Slidskassette 50 x 750	5,40



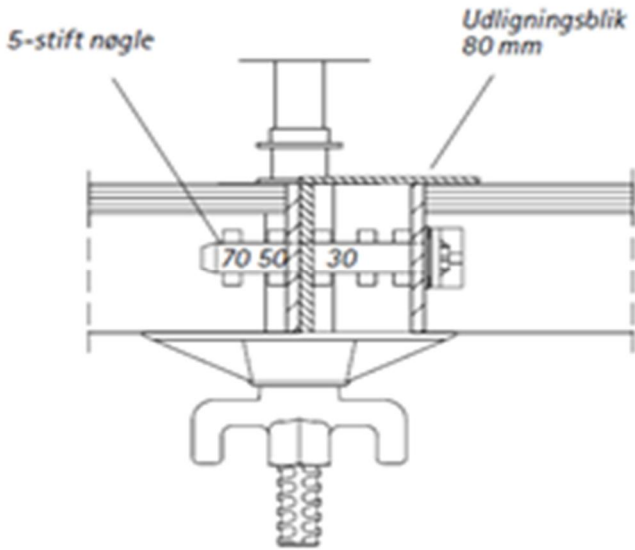
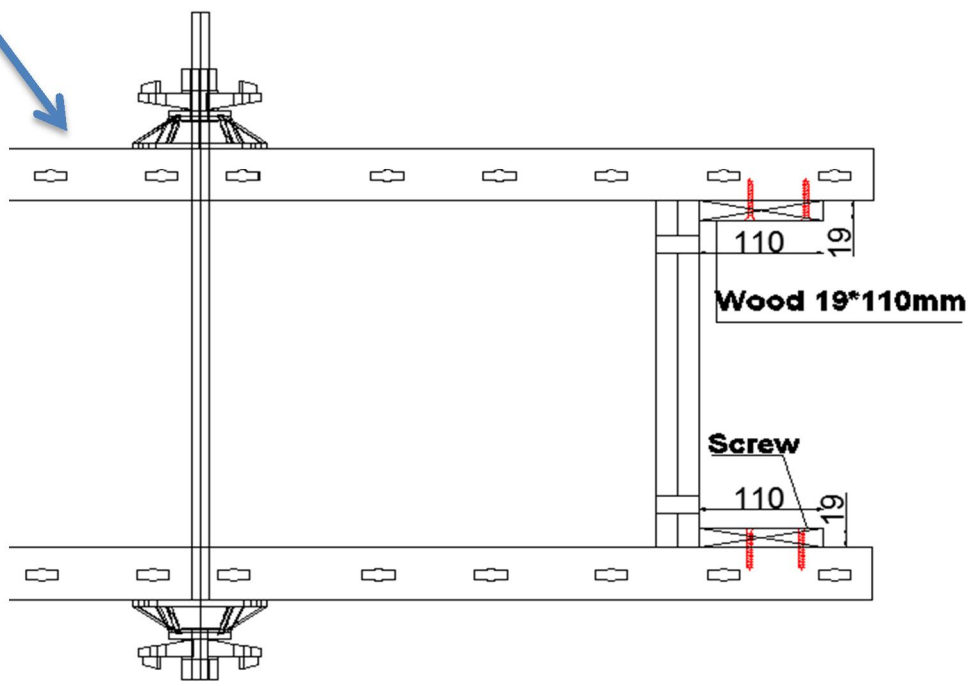
Figur 8.02. Nomogram til bestemmelse af maksimalt formtryk.

# Formwork plan

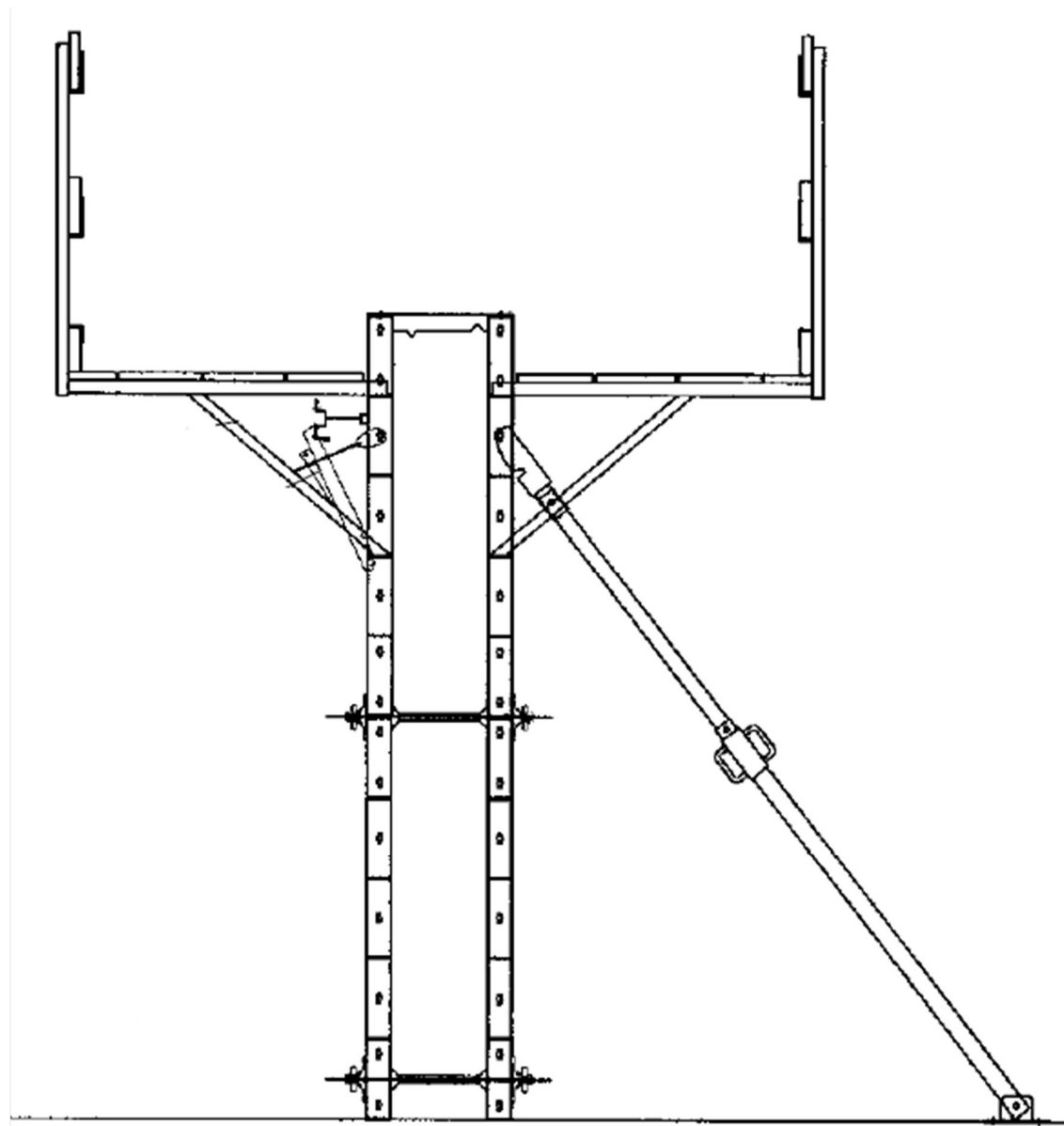


Always start placing formwork from the corner of the foundation and anchor geometrically correct. Make sure that every connection has been anchored properly so that it able to take the required pressure of the concrete and strength enough if incase anything happen.

## Closing the formwork



## Formwork Detail

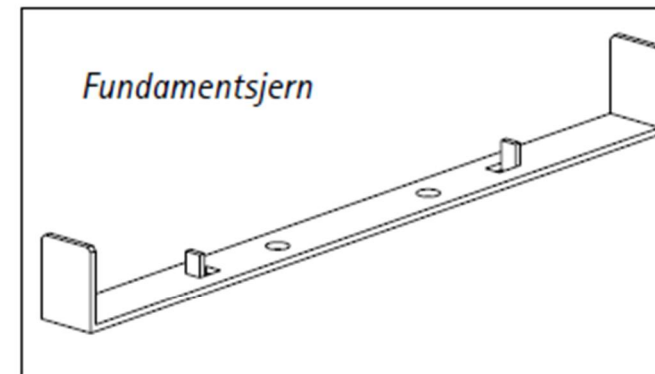
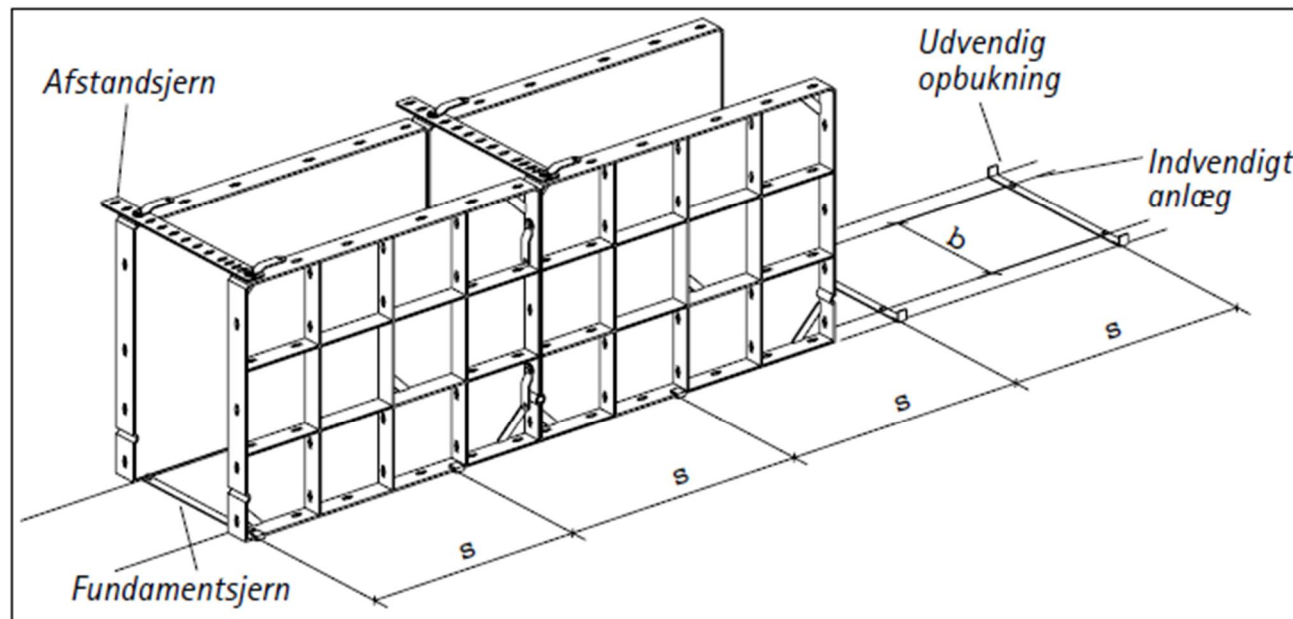


### **Note:**

**Maximum falling depth of the concrete must be 1m.**

**Vibrating will be done in every 300mm of concrete layer. Make sure that the vibrator is able to reach the 100mm down to the previous layer of concrete while pouring the new layers of concrete on it, as new layers must be compacted with the older layers of the concrete. If the concrete level is 300mm then the vibrator length must be 400 mm in order to compact the concrete very well.**

**Raster formwork is the ideal formwork for small and complex tasks. Raster is constructed as a steel lattice frame of flat steel 6 x 60 mm, inside and 6 x 75 mm outside. As shuttering skin used a 15 mm thick Finish birch plywood treated with a phenolic varnish durable, protected by the outer flat steel frames and regularly supported by the longitudinal and transverse inner flat section steel.**



Betonhøjde, mm	Afstand ml. fundamentsjern, mm
500 mm	1.000 mm
750 mm	750 mm
1.000 mm	500 mm
1.250 mm	250 mm



